

F-Secure PC Protection

User Guide

To open the product user interface, click the F-Secure icon in the lower-right corner of your screen. The launch pad is displayed:



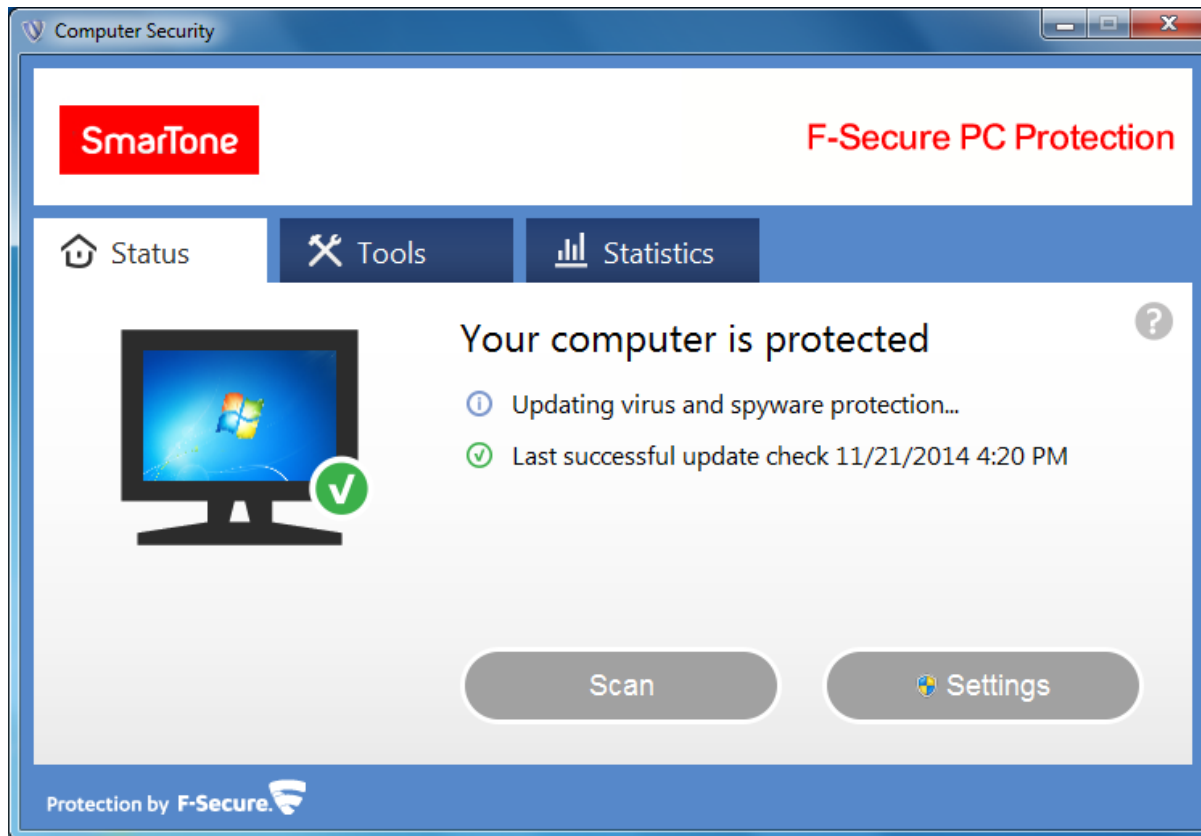
The launch pad contains all your applications. To open any of the applications available, click the application icon on the launch pad.

Part 1: Main User Interface



Main Page

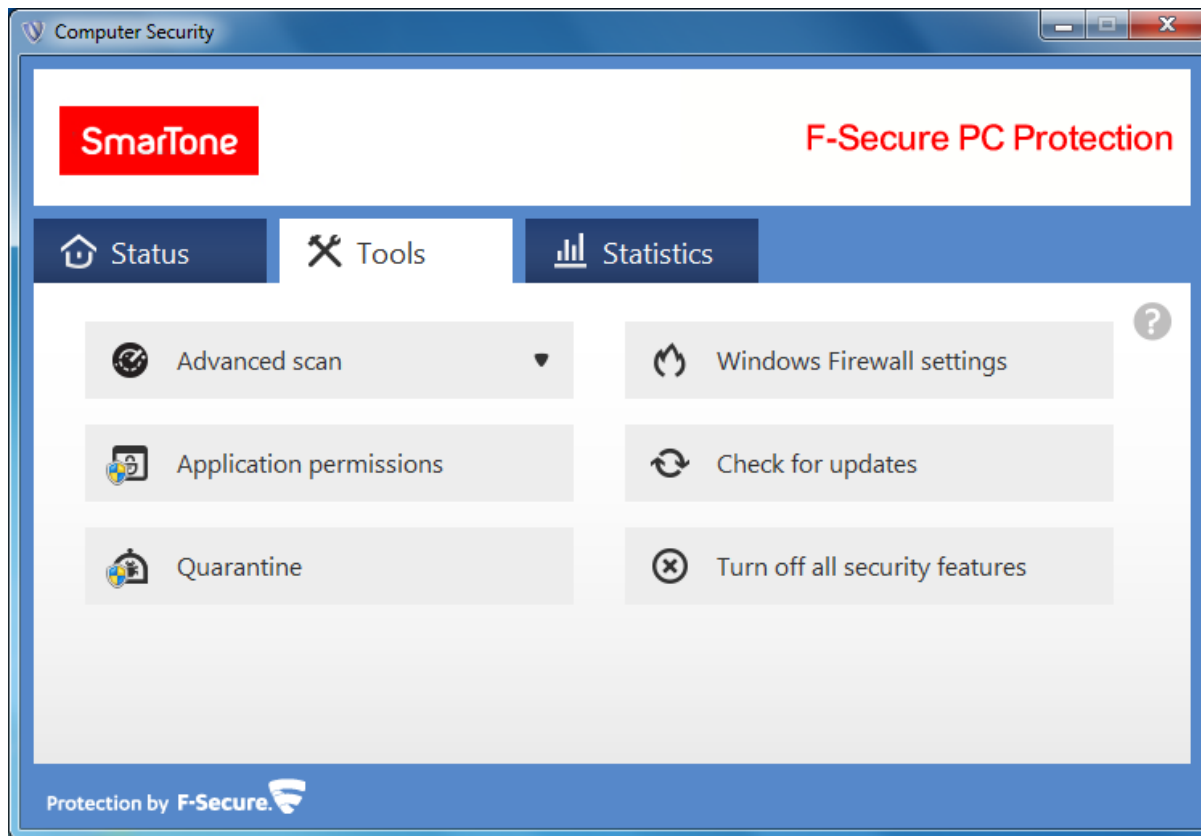
- Status – See how you are currently protected
- Tools – See what you can do with the program
- Settings – to check the advanced settings



Status screen

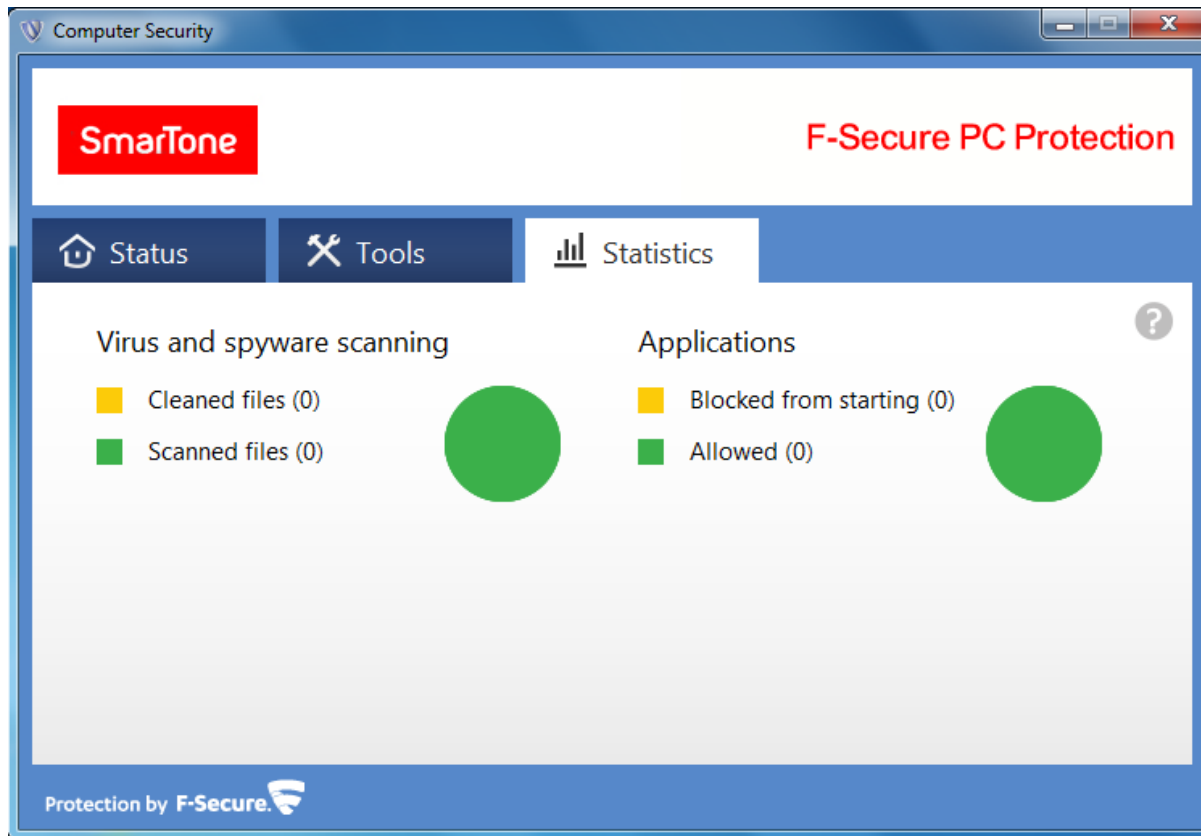
Computer

- Virus and spyware scanning status
- Scheduled scanning status
- Scan – Scan your computer or other device for viruses and spyware.
- Settings – Open the product's advanced settings.



Tools screen

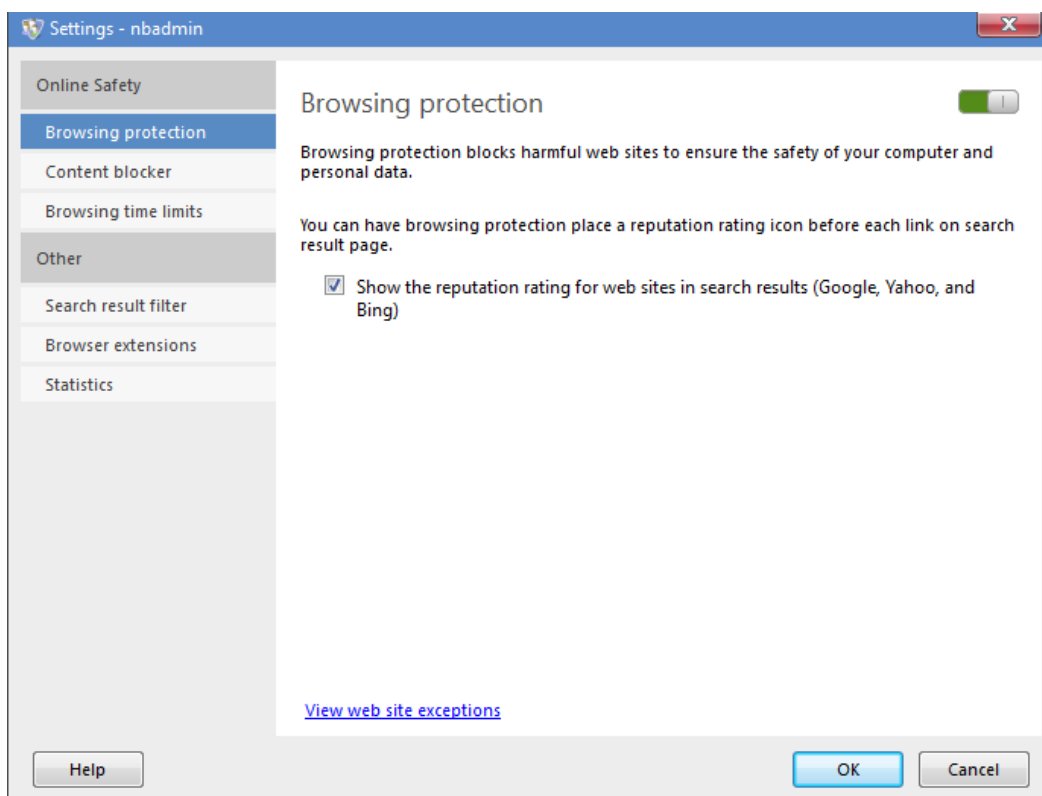
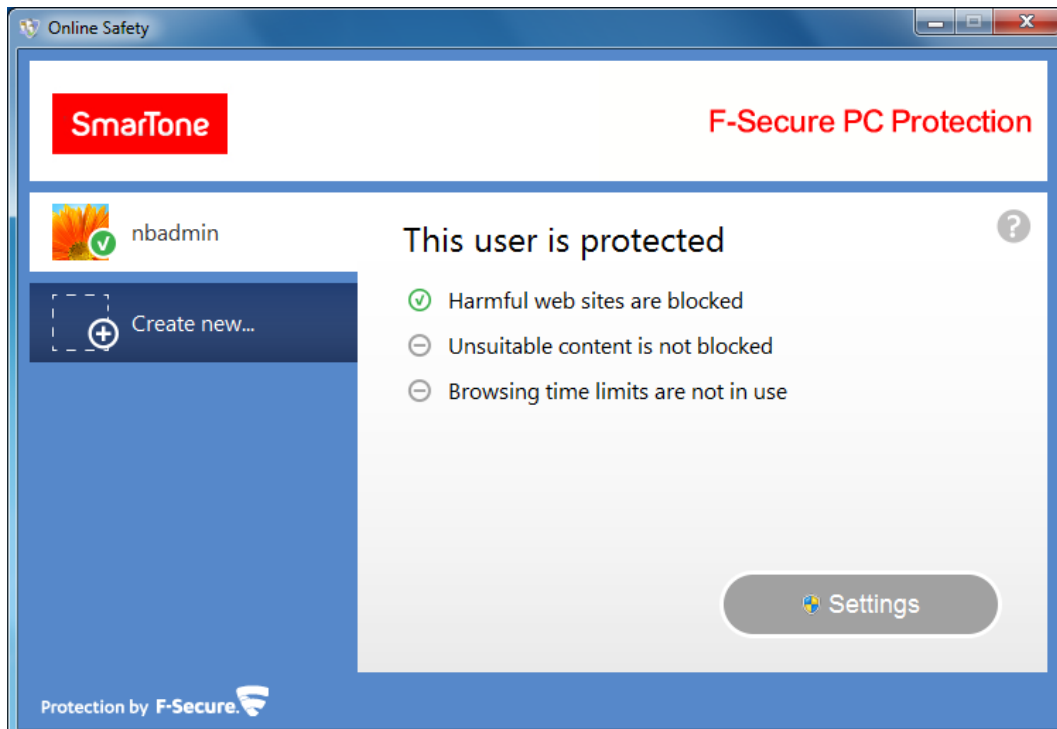
- Advanced scan - manual scan for viruses and other harmful applications in specific folder path.
- Application permissions – Let a program start if it has been blocked.
- Quarantine – Restore or delete a file or program that may have been quarantined.
- Windows Firewall settings - Enter the port number that you want to open for a program.
- Check for updates – To check if your computer has the latest virus database and software updates.
- Turn off all security features – shut down all security features. Only do so if absolutely necessary in special cases.



Statistics screen

- Virus and spyware scanning statistics.
- E-mail scanning statistics.
- Programs statistics.
- E-mail filtering statistics.

Part 2: Browsing Protection



- You will be blocked from accessing harmful websites when browsing protection is turned on.

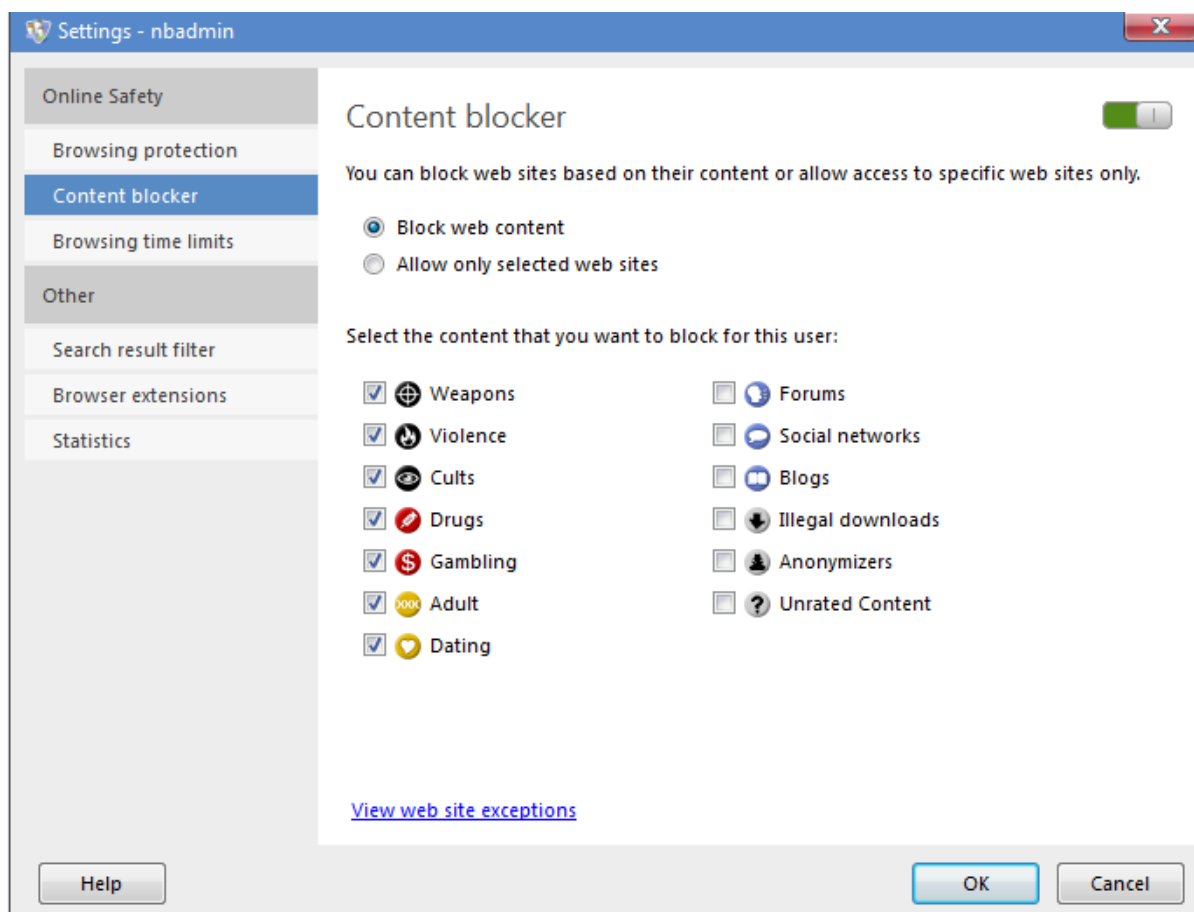
To turn browsing protection on or off:

1. On the main page, click "Settings".
2. Select "Internet" and then click "Browsing protection".
3. Choose one of the following:
 - To turn browsing protection on, select "Turn on browsing protection".
 - To turn browsing protection off, clear "Turn on browsing protection".
4. Click "OK".
5. If your browser is open, restart your browser to apply the changed settings.

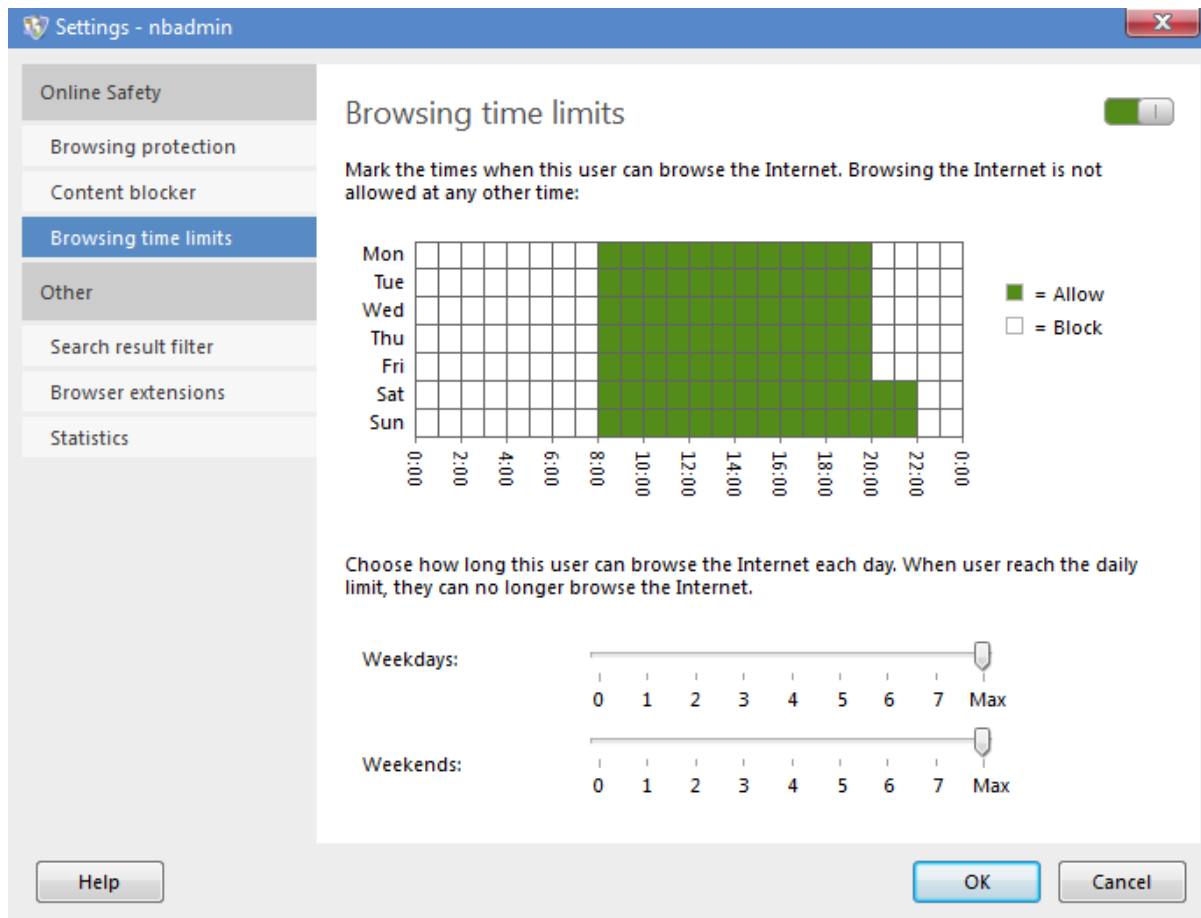
Depending on your choice, browsing protection is now either on or off.

Part 3: Parental Control

1. Select the web content to be blocked and then click "OK".

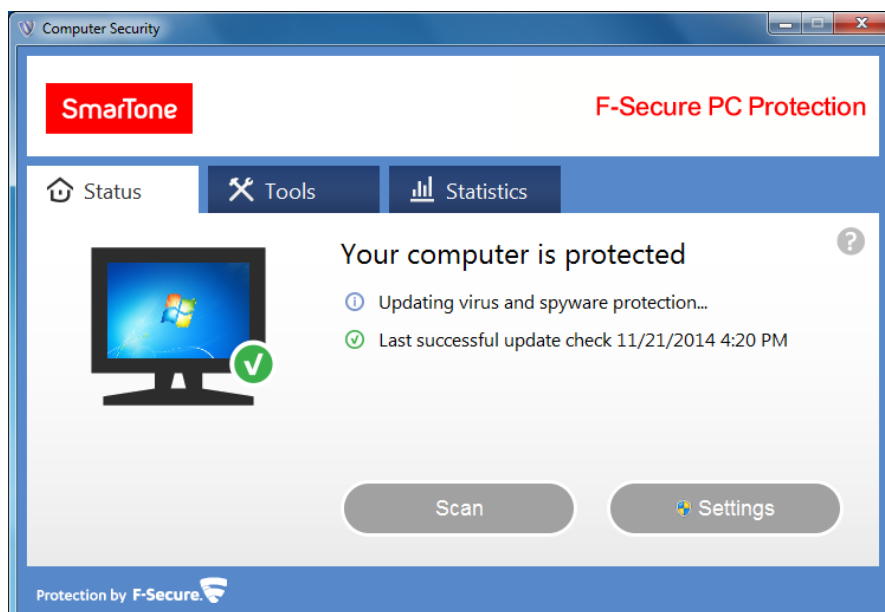


2. Setup date and time to prevent Internet usage and then click "OK".



Part 4: Virus Scanning

1. Click "Scan" and select the scanning method.

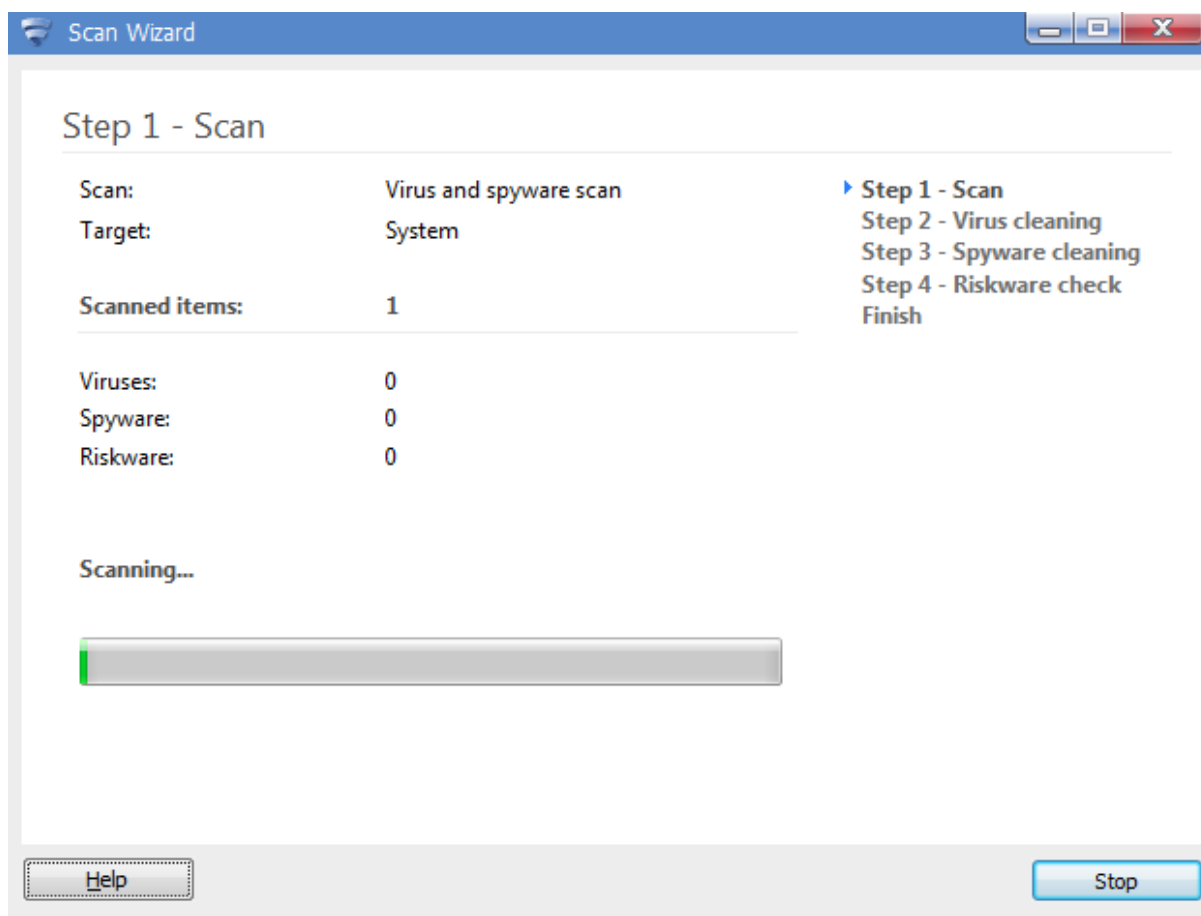


Updated on 02/12/2014

2. If you have selected "Choose what to scan", select the folder to be scanned and then click "OK".



3. F-Secure PC Protection has started virus scanning.



4. Click "Close" to complete the virus scanning.

